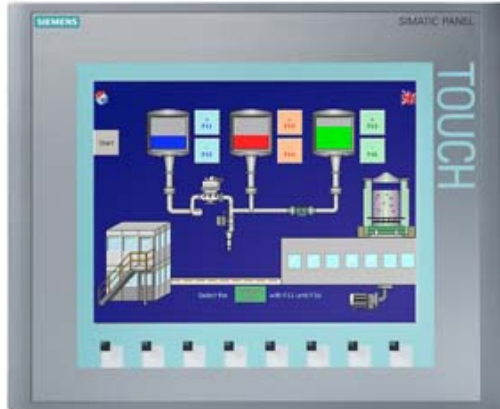


SIMATIC HMI KTP1000 BASIC COLOR PN, BASIC PANEL, KEY AND TOUCH OPERATION, 10" TFT DISPLAY, 256 COLORS, PROFINET INTERFACE, CONFIGURATION FROM WINCC FLEXIBLE 2008 SP2 COMPACT/ WINCC BASIC V10.5/ STEP7 BASIC V10.5, CONTAINS OPEN SOURCE SW WHICH IS PROVIDED FREE OF CHARGE FOR DETAILS SEE CD



### Product type designation

#### Display

Design of display	TFT
Screen diagonal	10.4 in
Display width	211.2 mm
Display height	158.4 mm
Number of colors	256
Resolution (pixels)	
• Horizontal image resolution	640
• Vertical image resolution	480

#### Backlighting

• MTBF backlighting (at 25 °C)	50 000 h
• Dimmable backlight	No

#### Control elements

##### Keyboard

• Function keys	
— Number of function keys	8
• Keys with LED	No
• System keys	No
• Numeric/alphabetical input	Yes (on-screen keyboard) / Yes (on-screen keyboard)
— Numeric keyboard	Yes; Onscreen keyboard
— Alphanumeric keyboard	Yes; Onscreen keyboard

##### Touch operation

• Design as touch screen	Yes
--------------------------	-----

Installation type/mounting	
Mounting in portrait format possible	No
Mounting in landscape format possible	Yes
Mounting position	vertical
maximum permissible angle of inclination without external ventilation	35°

Supply voltage	
Type of supply voltage	DC
Rated value (DC)	24 V
permissible range, lower limit (DC)	19.2 V
permissible range, upper limit (DC)	28.8 V

Input current	
Current consumption (rated value)	0.6 A
Inrush current A <sup>2</sup> s	0.2 A <sup>2</sup> s

Power	
Power consumption, typ.	15 W

Memory	
Flash	Yes
RAM	Yes
Usable memory for user data	1 024 kbyte

Type of output	
Acoustics	Sound signal
• Buzzer	Yes
• Speaker	No

Time of day	
Clock	
• Hardware clock (real-time clock)	No
• Software clock	Yes
• Battery-backed	No
• Synchronizable	Yes

Interfaces	
Number of RS 485 interfaces	0
Number of USB interfaces	0
Number of 20 mA interfaces (TTY)	0
Number of RS 232 interfaces	0
Number of RS 422 interfaces	0
Number of parallel interfaces	0
Number of other interfaces	0
Number of SD card slots	0
With software interfaces	No

Industrial Ethernet	
• Number of industrial Ethernet interfaces	1
• Industrial Ethernet status LED	2
Protocols	
PROFINET	Yes
PROFINET IO	No
IRT	No
PROFIBUS	No
MPI	No
Protocols (Ethernet)	
• TCP/IP	Yes
• DHCP	Yes
• SNMP	Yes
• DCP	Yes
• LLDP	Yes
WEB characteristics	
• HTTP	No
• HTML	No
Further protocols	
• CAN	No
• MODBUS	No; Modicon (MODBUS TCP/IP)
• Supports protocol for EtherNet/IP	Yes
Interrupts/diagnostics/status information	
Diagnostic messages	
• Diagnostic information readable	No
Degree and class of protection	
IP (at the front)	IP65
Enclosure Type 4 at the front	Yes
Enclosure type 4x at the front	Yes
IP (rear)	IP20
Standards, approvals, certificates	
CE mark	Yes
KC approval	Yes
cULus	Yes
RCM (formerly C-TICK)	Yes
Marine approval	
• Germanischer Lloyd (GL)	No
• American Bureau of Shipping (ABS)	No
• Bureau Veritas (BV)	No
• Det Norske Veritas (DNV)	No
• Lloyds Register of Shipping (LRS)	No

• Nippon Kaiji Kyokai (Class NK)	No
• Polski Rejestr Statkow (PRS)	No
<b>Use in hazardous areas</b>	
• ATEX Zone 2	No
• ATEX Zone 22	No
• cULus Class I Zone 1	No
• cULus Class I Zone 2, Division 2	No
• FM Class I Division 2	No

### Ambient conditions

<b>Ambient temperature in operation</b>	
• Operation (vertical installation)	0 °C to +50 °C
— in vertical mounting position, minimum	0 °C
— in vertical mounting position, maximum	50 °C
• Operation (max. tilt angle)	0 °C to +40 °C
— at maximum tilt angle, minimum	0 °C
— at maximum tilt angle, maximum	40 °C
<b>Storage/transport temperature</b>	
• Min.	-20 °C
• max.	60 °C
<b>Relative humidity</b>	
• Operation, max.	90 %

### Operating systems

<b>Pre-installed operating system</b>	
• Windows CE	No
proprietary	Yes

### Configuration

Message indicator	Yes
Alarm logging system (incl. buffer and acknowledgment)	Yes
Process value display (output)	Yes
Process value default (input) possible	Yes
Recipe administration	Yes
<b>Configuration software</b>	
• STEP 7 Basic (TIA Portal)	Yes; via integrated WinCC Basic (TIA Portal)
• STEP 7 Professional (TIA Portal)	Yes; via integrated WinCC Basic (TIA Portal)
• WinCC flexible Compact	Yes
• WinCC flexible Standard	Yes
• WinCC flexible Advanced	Yes
• WinCC Basic (TIA Portal)	Yes
• WinCC Comfort (TIA Portal)	Yes
• WinCC Advanced (TIA Portal)	Yes

- WinCC Professional (TIA Portal)

Yes

## Languages

### Online languages

- Number of online/runtime languages

5

### Languages

- Languages per project

32

- Languages

D, GB, F, I, E, CHN "traditional", CHN "simplified", DK, FIN, GR, J, KP / ROK, NL, N, PL, P, RUS, S, CZ / SK, TR, H

— D

Yes

— GB

Yes

— F

Yes

— I

Yes

— E

Yes

— Chinese traditional

Yes

— Chinese simplified

Yes

— DK

Yes

— FIN

Yes

— GR

Yes

— J

Yes

— KP / ROK

Yes

— NL

Yes

— N

Yes

— PL

Yes

— P

Yes

— RUS

Yes

— S

Yes

— CZ

Yes

— SK

Yes

— TR

Yes

— H

Yes

## Functionality under WinCC (TIA Portal)

### Libraries

Yes

### Task planner

Yes

- time-controlled

No

- task-controlled

Yes

### Help system

Yes

- Number of characters per info text

320

### Message system

- Number of alarm classes

32

- System messages HMI

Yes

• System messages, other (SIMATIC S7, Sinumerik, Simotion, etc.)	No
• Number of characters per message	80
• Number of process values per message	8
• Message indicator	Yes
• Message buffer	Ring buffer (n x 256 entries), non-retentive
— Number of entries	256
— Circulating buffer	Yes
— retentive	Yes
— maintenance-free	Yes
<b>Recipe administration</b>	
• Number of recipes	5
• Data records per recipe	20
• Entries per data record	20
• Size of internal recipe memory	40 kbyte
• Recipe memory expandable	No
<b>Variables</b>	
• Number of variables per device	256
• Number of variables per screen	30
• Limit values	Yes
• Multiplexing	Yes
• Structs	No
• Arrays	Yes
<b>Images</b>	
• Number of configurable images	50
• Permanent window/default	Yes; No permanent window can be configured
• Global image	Yes
• Start screen configurable	Yes
• Image selection by PLC	Yes
• Image number in the PLC	Yes
<b>Image objects</b>	
• Number of objects per image	30
• Text fields	Yes
• I/O fields	Yes
• Graphic I/O fields (graphics list)	Yes
• Symbolic I/O fields (text list)	Yes
• Date/time fields	Yes
• Switches	Yes
• Buttons	Yes
• Graphic view	Yes
• Icons	Yes

• Geometric objects	Yes
<b>Complex image objects</b>	
• Number of complex objects per screen	5
• Alarm view	Yes
• Trend view	Yes
• User view	Yes
• Status/control	No
• Sm@rtClient view	No
• Recipe view	Yes
• f(x) trend view	No
• System diagnostics view	No
• Media Player	No
• Bar graphs	Yes
• Sliders	No
• Pointer instruments	No
• Analog/digital clock	No
<b>Lists</b>	
• Number of text lists per project	150
• Number of entries per text list	30
• Number of graphics lists per project	100
• Number of entries per graphics list	30
<b>Archiving</b>	
• Number of archives per device	0
<b>Security</b>	
• Number of user groups	50
• Number of user rights	32
• Number of users	50
• Password export/import	No
• SIMATIC Logon	No
<b>Character sets</b>	
• Keyboard	US American (English)
— US American (English)	Yes
• Character sets	Tahoma, WinCC flexible Standard, symbol languages
— Tahoma	Yes
— Arial	No
— Courier New	No
— WinCC flexible Standard	Yes
— Ideographic languages	Yes
• Font size freely scalable	No
• Additional character sets can be loaded	No
<b>Transfer (upload/download)</b>	

• MPI/PROFIBUS DP	No
• USB	No
• Ethernet	Yes
• using external storage medium	No
<b>Process coupling</b>	
• S7-1200	Yes
• S7-1500	Yes
• S7-200	Yes; Via CP
• S7-300/400	Yes
• LOGO!	Yes
• Win AC	Yes
• SINUMERIK	No
• SIMOTION	No
• Allen Bradley (EtherNet/IP)	Yes
• Allen Bradley (DF1)	No
• Mitsubishi (MC TCP/IP)	Yes
• Mitsubishi (FX)	No
• OMRON (FINS TCP)	No
• OMRON (LINK/Multilink)	No
• Modicon (Modbus TCP/IP)	Yes
• Modicon (Modbus)	No
<b>Service tools/configuration aids</b>	
• Clean screen	Yes
• Touch calibration	Yes
• Backup/restore	Yes
• Backup/Restore automatically	No
• Simulation	Yes
• Device switchover	Yes
• Delta transfer	No
<b>I/O / Options</b>	
I/O devices	none
• Printer	No
• MultiMediaCard	No
• SD card	No
• USB memory	No
<b>Mechanics/material</b>	
Type of housing (front)	plastic
• plastic	Yes
• aluminum	No
• Stainless steel	No



## Dimensions

Width of the housing front	335 mm
Height of housing front	275 mm
Mounting cutout, width	310 mm
Mounting cutout, height	248 mm
Device depth	60 mm

## Weights

Without packaging	2.65 kg
With packaging	3.38 kg
<b>last modified:</b>	10.02.2015